



(6) shall constitute a quorum for the transaction of business at a general meeting, this meeting is with a quorum.

C. Attendees introduce themselves.

## II. RECOGNITION OF SPECIAL GUESTS

A. Sallie Alcorn, Council Member At-Large Position 5.

Presentation on the new City of Houston FY budget with a 6% increase. This year's budget is outcome-based budgeting rather than incremental budgeting in the past. In District J, violent crime is down 8% and non-violent crime is down 2%. Commercial vehicles are now prohibited from parking on a city street for more than 2 hours unless loading or unloading. Large vehicles are now included, and large vehicles are also prohibited on public streets from 2 am to 6 am.

Gena Sylvester, President asks about solid waste. Alcorn responds that solid waste service needs better equipment and service. Signup bonuses are active for new hires. \$3 million was recently paid for illegal dumping.

John White, Bonham Acres asks about why solid waste service has been a problem for years. Alcorn responds that citizens do not like additional solid waste fees.

Asher Alexander, Robindell asks about technology to improve solid waste weekly service. Alcorn responds that technology will be needed to solve the problems.

B. Lynn Henson, City of Houston Division Manager of Community and Regional Planning Neighborhood Resilience Plan. The goal is to create a plan to make the Braeburn Super Neighborhood's area more resilient. Resilient districts look at neighborhoods. **See attachments #1-#3).**

C. Abraham Zorilla, City of Houston Planner IV

Explanation of Activity. There are three public meetings: (1) kick-off, (2) projects and partners, and (3) prioritize and adopt. A final draft of projects will be prioritized at the last meeting. Ideas will be taken to the City of Houston subject matter experts for viability. Several city departments are present: Solid Waste Department, Office of Emergency Management, Mayor's Office of Resilience and Sustainability, and Green Building Resource Center.

D. Edward Pollard, City of Houston Council Member District J

Ensure neighbors know about the planning project and how they can be more engaged. Make your comments known to the City of Houston knows your opinions.

E. Steve Stelzer, City of Houston Green Building Resource Center.

There is a resilient home guide available to homeowners including a diagnostic tool kit of eight questions.

F. Abraham Zorilla, City of Houston Planner IV

Introduction to the communication activity: breakout participation, collaboration, and discussion at various boards in the room. **See attachments #4-#9.**

**III. ADJOURN**

Gena Sylvester, President announced the General Session of the Braeburn Super Neighborhood Council #30 adjourned without objection on Thursday, July 13, 2023 at 20:05.

## ATTACHMENT #1: NRP HANDOUT SHEET

# BRAEBURN

## Neighborhood Resilience Planning

### DATA SNAPSHOT



The Neighborhood Resilience Planning study for Braeburn is situated between Brays Bayou and Bissonnet in southwest Houston. Braeburn is a group of subdivisions along Brays Bayou, west of Hillcroft Avenue and south of the Sharpstown community. The first of these middle-class subdivisions was developed after World War II at a time when Bissonnet provided the route into the city. Data included here has been compiled from the decennial Census data in 2020 the latest American Community Survey.

Many large tracts of land were developed as apartment complexes. Subdivisions found here include Robindell, Braeburn Glen, Braes Terrace, Larkwood, Braeburn Valley, and the acreage lot subdivision, Brae Acres. Braeburn is approximately 2,550 acres (4 sq. miles).



77036

BEECHN

## ATTACHMENT #2: NPR DATA HANDOUT

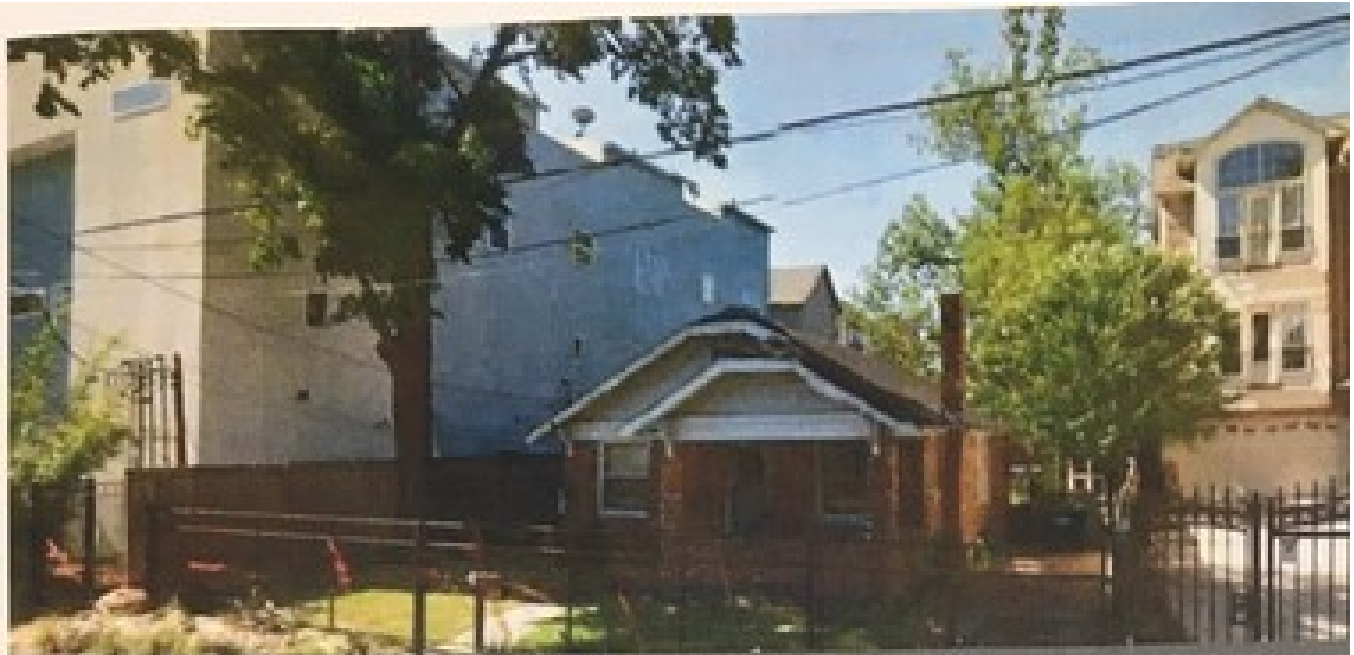
# BRAEBURN

## Neighborhood Resilience Planning

### DATA SNAPSHOT

	BRAEBURN		CITY OF F
	2020		20
	Number	Percentage	Number
<b>Total Population</b>	17,961	1%	2,313,238
<b>Race/Ethnicity</b>			
White Alone	3,104	17%	558,561
Black or African American Alone	1,725	10%	515,956
Asian Alone	995	6%	157,230
Hispanic or Latino	23,532	131%	1,028,742
Other	1,837	10%	380,298
<b>Age</b>			
17 Years or Younger	5,608	31%	626,744
18-64 Years Old	11,132	62%	1,432,366
65 Years or Older	490	3%	254,128
<b>Place of Birth</b>			
Foreign Born Residents	8,595	48%	701,914
<b>Means of Transportation to Work</b>			
Drove Alone/Carpooled	8,217	39%	947,696
Public Transportation	574	3%	40,447
Other (Walk, Bicycle, Work at Home, etc.)	604	3%	114,951
<b>Educational Attainment 25 Years +</b>			
Less Than High School	5,838	23%	307,533
High School Graduate (includes equivalency)	230	1%	335,277
Some college (no degree)	688	3%	265,241
Bachelor's degree	295	1%	402,870
Master's, Professional Doctorate degree	3,781	15%	206,665
<b>Median Household Income</b>	\$40,669		
<b>Percent of Households Below Poverty</b>	1,508	20%	142,596

ATTACHMENT #3: PRESERVATION HANDOUT



# Learn How You Can Preserve the Character of Your Neighborhood

**New land development rules in the City of Houston mean more Houstonians can maintain their neighborhood's established character.**

- **Preserve the existing lot sizes and prevent incompatible development.**
- **Ensure that future buildings conform to existing building lines.**

**To get an application for your neighborhood or to ask for more information, contact:**

**Planning and Development Department**

## What is it?

A *Special Minimum Lot Size* designation prevents lots from being subdivided into lots smaller than a certain size, which in most cases, prevents new townhomes. For example, if 5,000 square feet was a *Special Minimum Lot Size* for an area, no lots within that area could be subdivided into lots smaller than 5,000 square feet.

A *Special Minimum Building Line* designation prevents new buildings from being built closer to the street than a portion of the buildings already there. For example, if a block of homes has a building line where the typical distance from the front of the building to the sidewalk is 20 feet, new construction must be placed no closer than 20 feet to the sidewalk.

## How can your neighborhood get these designations?

The Planning and Development Department staff determine if your neighborhood qualifies. They can help you complete the application process.

Contact the Planning and Development Department at 832-350-5000.

ATTACHMENT #4: REPORTING AND SUPPORT BOARD

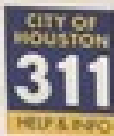
# BRAEBURN

## Reporting and Support

### REPORTING ON ISSUES IN THE STORM DRAINAGE SYSTEM

The stormwater drainage system is designed to convey rainfall runoff to the bayous and away from properties. The drainage system is composed of gravity mains, ditches, and culverts which are designed to fill with water during a rain event. The City's stormwater system is designed to handle more frequent less intensive storm events. Effective drainage can be impeded by trash, sediment, and debris collecting in the ditches and blocking sewers and culverts. Proper maintenance can help the system operate at full capacity and alleviate flooding during smaller events.

In August of 2011, the City of Houston launched its 311 Houston Service Helpline, a consolidated call center designed to make city government more user-friendly and responsive to city residents by providing citizens with a one telephone number to call for information on city services and to report non-emergency concerns. More than 300 specific Service Request types have been defined and scripted within the system. Contact 311 to report items from illegal dumping, to traffic fines, from sewer concerns to pothole problems and neighborhood complaints.



- CALL 311
- CALL 713-837-0311
- EMAIL 311@HOUSTONTX.GOV
- DOWNLOAD the "HOUSTON 311" APP

**CONTACT 311 TO REPORT**  
 Water Leak, Street Hazard, Sewer Issue, Wastewater Blockage, Potholes, Damage On Property, Garbage Collector Problem, Missed Garbage Pick-up, Water Service, Traffic Signal Maintenance, Missed Heavy Trash Pickup, Dead Animal Collection, ...

### WASTE AND TRASH COLLECTION PICK UP SCHEDULE

- Trash - Tuesday
- Recycle - Tuesday
- Heavy Trash**
  - 2nd Monday
  - 2nd Tuesday

**Junk Waste** - Feb, Apr, Jun, Aug, Oct, Dec.  
**Yes!** Accepted: Furniture, Appliances, and Bulky Material  
**NO!** Not Accepted: Roofing, Shingles, Brick, Plaster, and Concrete

**Tree Waste** Jan, Mar, May, Jul, Sep, Nov.

<https://www.houstontx.gov/solidwaste/schedule.html> for more information.

### HEAVY TRASH COLLECTION SCHEDULE



### REPORT A STREELIGHT OUTAGE

CenterPoint Energy maintains streetlights through territory in and around Houston.

#### You will be asked to provide

- a poll number for the non-functioning lights
- contact information (in case more information is needed)
- an e-mail address (if you want feedback regarding the issue)
- the number of street lights he would like to report
- the system will guide you through the remaining steps

#### Online

Fill in the online form or use the online map [www.centerpointenergy.com/streetlightout](http://www.centerpointenergy.com/streetlightout)

#### Call

713-207-2222 or toll free 800-333-7143

#### Email

[SLCAdmin@centerpointenergy.com](mailto:SLCAdmin@centerpointenergy.com)

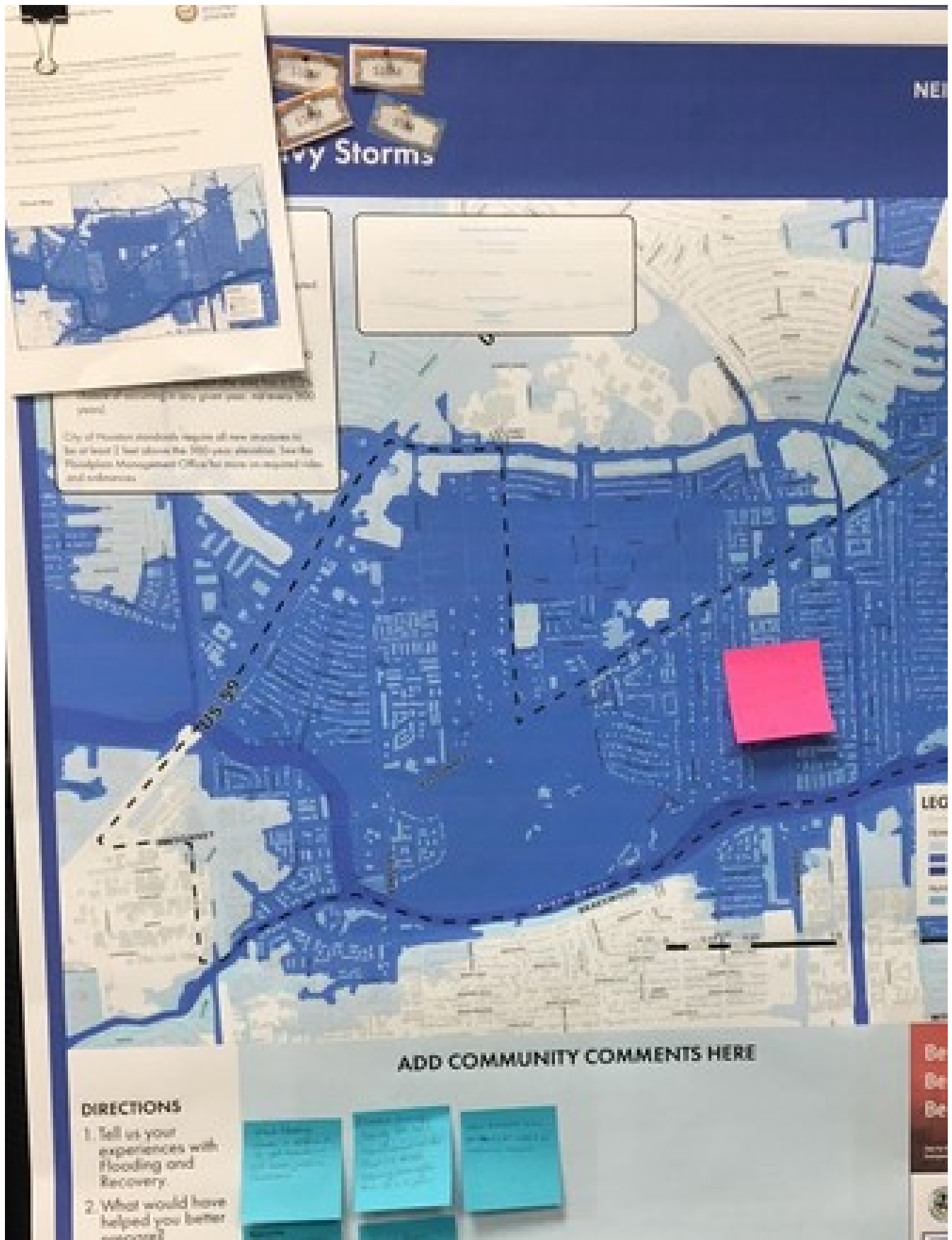
### CENTERPOINT ENERGY'S AGENCIES AND ACT

Helps customers in income eligible households by providing energy saving upgrades.

#### You qualify if:

- you are a residential customer of CenterPoint Energy Service Area
- your home is at least 16 years old
- you have an annual household income that qualifies under income guidelines; or
- you receive benefits from a public assistance program such as Assistance or Medicare, Supplemental Security Income, Children's Health Insurance, Temporary Assistance

ATTACHMENT #5: STORMS BOARD





## ATTACHMENT #6: EXTREME WEATHER

# Extreme Hot + Extreme Cold

- Public Swimming Pool
  - Covered areas at the park
  - More trees no Oak / Along major streets
  - No bushes
- 1 ✓ Hard to get pipe wrap during extreme cold
- More live oak trees 100 year not 30 year at the dog park, offer to home owners
  - Education to home owners about the importance of trees
  - Trees on sidewalks not in the median. (Shaded trees)
  - Plant trees for pedestrians.
  - Integrate energy grid. to avoid blackouts + have energy resilience.
  - Energy storage methods, for city + state.
  - 311 to help people prepare for extreme/cold that especially women, singles.
  - Help with tree damage after storm
  - Faster service from 311
  - Allow for solar panels on both front + Back of home.
  - Allow for paint that reflects sun light. + other options for cooling homes.
  - Convene a weather summit to pitch products + Best Practices
  - 1 ✓ Include more mandatory trees
  - Make blankets available

with extreme heat and/or cold.

2. What would have helped you better prepare?

3. What type of assistance did you receive or

ATTACHMENT #7: COMMUNITY HISTORY

**BRAEBURN**  
Community History

NEIGHBORHOOD RESILIENCE PLANNING

LAND USE

COUNCIL DISTRICTS

LEGEND

LEGEND

CIVIC CLUBS

**List of Active Civic Groups**

These clubs represent residents and businesses who share a passion for making a positive impact in Braeburn. This list includes civic clubs, homeowners associations in the super neighborhood.

Are any groups missing? Circle a marker and add them on the map and add their name.

- Braeburn Super Neighborhood
- Braeburn Glen Oaks Club

**ADD COMMUNITY COMMENTS HERE**

- What neighborhood history is important to capture?
- Who are the historical figures in the community? What did they contribute?
- What are the oldest buildings or landmarks in the neighborhood and what is their historical significance?
- What are some stories, legends, or favorite places?
- How have weather events affected or changed the community?
- Add pictures here.

Community

ATTACHMENT #8: ASSETS AND AMENITIES




ATTACHMENT #9: NEIGHBORHOOD PRIDE

**BRAEBURN**  
Neighborhood Pride

NEIGHBORHOOD RESILIENCE PLAN

**Where Do You Live? What Do You Love? What Needs Love?**



DIRECTIONS  
1. Place a blue

ADD COMMUNITY COMMENTS HERE

The image shows a large aerial photograph of the Braeburn neighborhood, which is shaped like a heart. The map is overlaid with numerous colored pins: red, yellow, and blue. The red pins are scattered across the central and right-hand sides of the heart, while yellow and blue pins are more concentrated in the lower-right and bottom-center areas. The map shows residential streets, green spaces, and a central park area. The overall layout is framed by a blue border with white text at the top and bottom.